

344 Queens Parade FITZROY NORTH VIC

EXPRESSIONS OF INTEREST CLOSE 5TH JUNE @ 1PM

Inspection Strictly by appointment only

This outstanding double story shop and residence represents a prime landholding with an attractive presence amidst the retail hustle and bustle of Queens Parade Village.

One of a select cluster of extra deep properties with a north facing rear courtyard and direct lane way access for off street parking.

This Victoria shop front building on a 240sqm (approx) allotment is Commercial 1 zoned adjoining popular retailers all benefiting from the wide footpath space, village atmosphere and proximity to public transport.

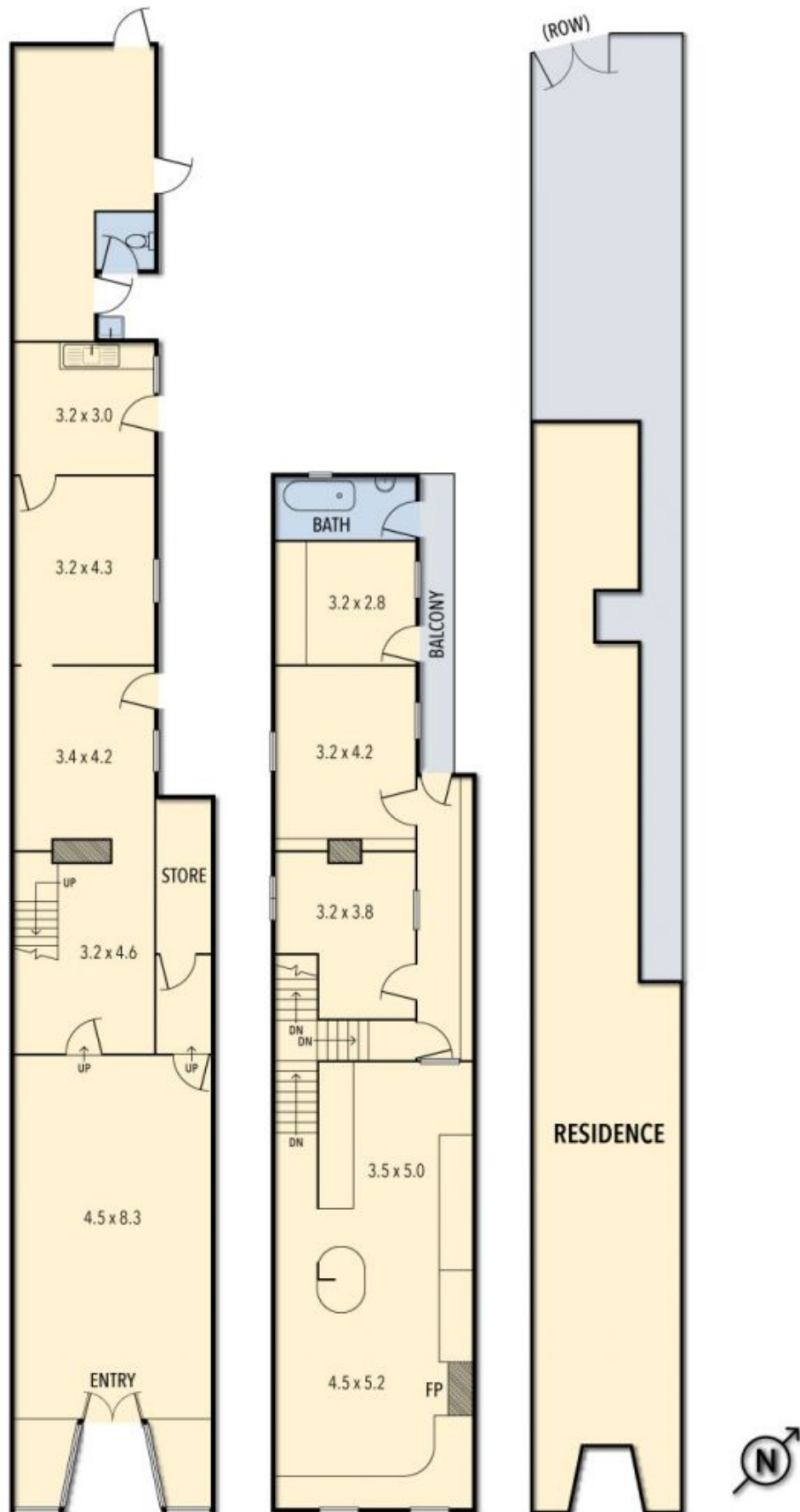
Situated in the busy Neighborhood activity center precinct on "Melbourne's first major road", the landmark Queens Parade Location with it's cafes, restaurants and specialty

Building Size : 200 sqm

View : <https://www.kellyshiel.com.au/sale/vic/inner-city/fitzroy-north/commercial/other/7507605>



Damien Shiel
03 9671 4111



THE ABOVE PLAN IS AN ARTIST'S IMPRESSION ONLY, IT INCLUDES ELEMENTS THAT ARE FOR DISPLAY PURPOSES ONLY AND MAY NOT BE TO SCALE. LANDSCAPING SHOWN IS INDICATIVE ONLY. DIMENSIONS ARE APPROXIMATE.