



98 Gatehouse Street Parkville VIC

3 2 1

In a premier location opposite Royal Park this charming double-storey Victorian Balcony Terrace offers a blend of period elegance and modern potential. Bathed in natural light and featuring original details, the home comprises formal living and dining rooms, kitchen with an adjoining casual dining or study area, bathroom, and separate laundry.

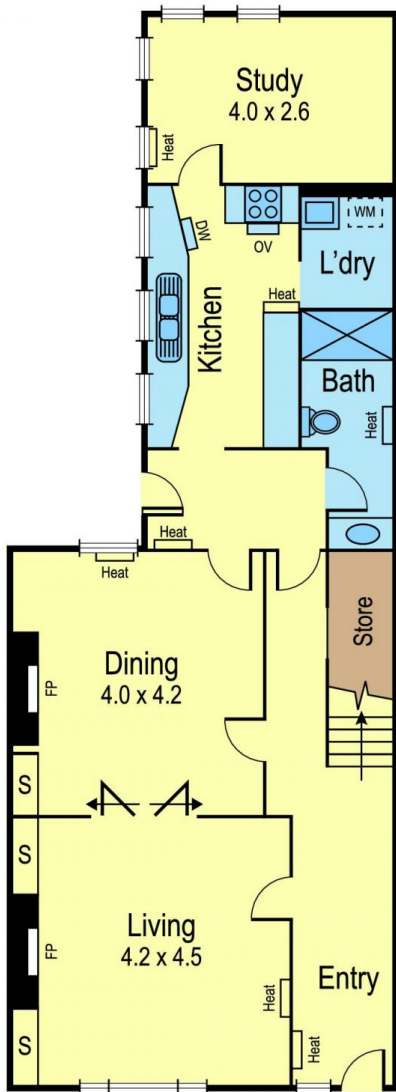
The first floor is dedicated to an impressive main bedroom with access to a spacious balcony, two additional generous bedrooms, a central bathroom, and another kitchen/meals area. The property also includes a spacious rear courtyard garden with a carport and direct access to Redpath Rise and Levers Reserve Park.

Additional features include hydronic heating, decorative open fireplaces, a dishwasher, polished floors, new carpet and NBN network via FTTP.

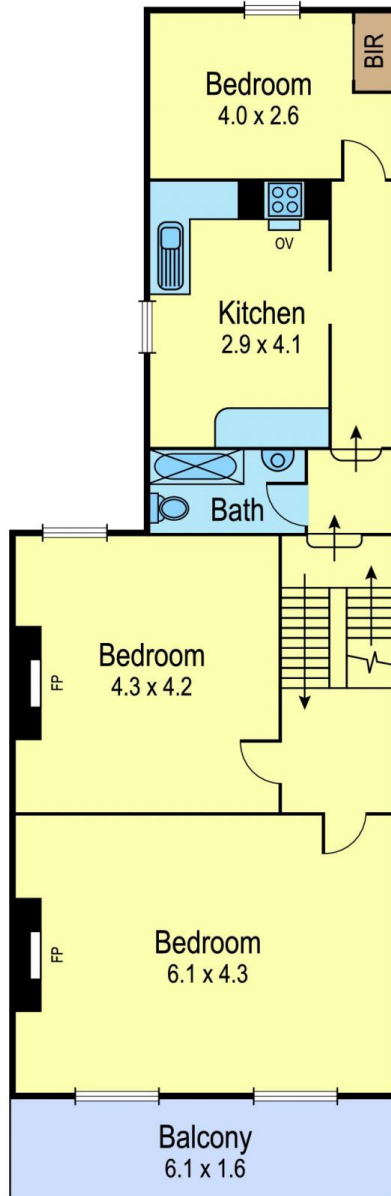
Price : \$2,500,000 - \$2,750,000

Land Size : 272 sqm

View : <https://www.kellyshiel.com.au/sale/vic/inner-city/parkville/residential/house/8109573>



Ground Floor



First Floor

Redpath Rise Lane

